



Large Restaurant or Redevelopment Opportunity

10810 W. 75th Street Shawnee, Kansas



SALE PRICE: \$1,500,000 | 11,716 SF BUILDING

DEMOGRAPHICS

	1 mile	3 miles	5 miles
Estimated Population	12,010	101,945	227,622
Avg. Household Income	\$68,028	\$87,185	\$98,874

- 3.06 Acres Zoned Commercial Neighborhood
- Large Kitchen, 2 Walk-In Coolers and 1 Walk-In Freezer
- Minutes from I-35 and 75th Street
- Over 21,000 cars per day on 75th Street
- Nearby Tenants include Walmart Grocery, Big Lots, Waffle House, Scooters, and Chadwick Luxury Apartments

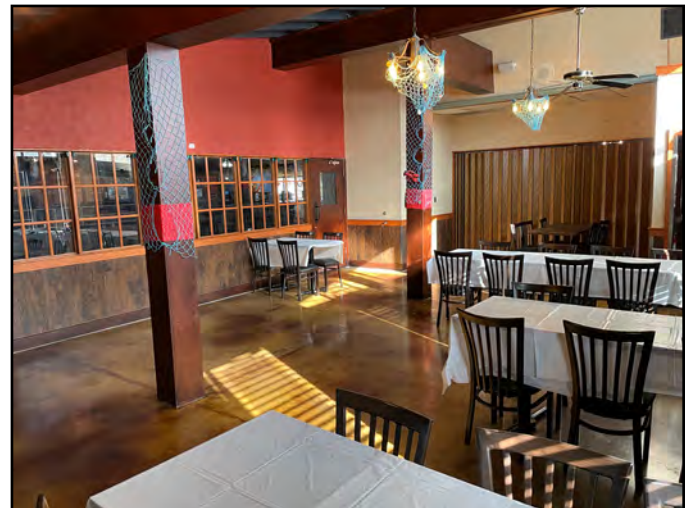
 [CLICK HERE TO VIEW MORE LISTING INFORMATION](#)

For More Information Contact: *Exclusive Agents*
DANIEL BROCATO | 816.412.7303 | dbrocato@blockandco.com
BILL MAAS, CCIM | 816.412.7392 | bmaas@blockandco.com



All information furnished regarding property for sale or lease is from sources deemed reliable, but no warranty or representation is made as to the accuracy thereof and the same is subject to errors, omissions, changes of prices, rental or other conditions, prior sale or lease or withdrawal without notice.

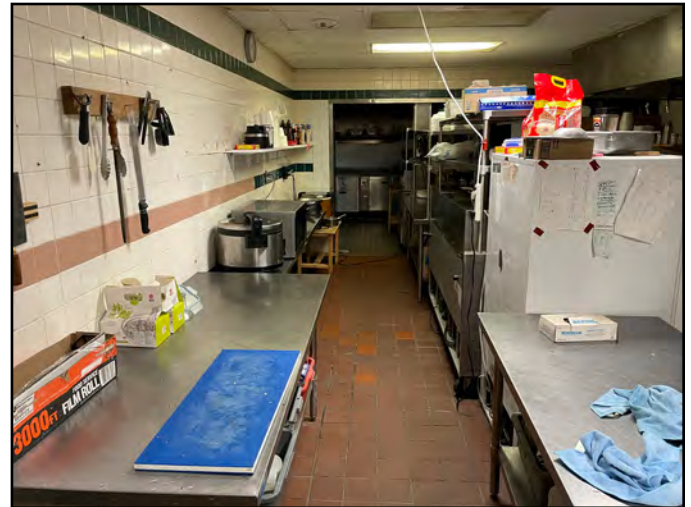
PHOTOS



PHOTOS



PHOTOS

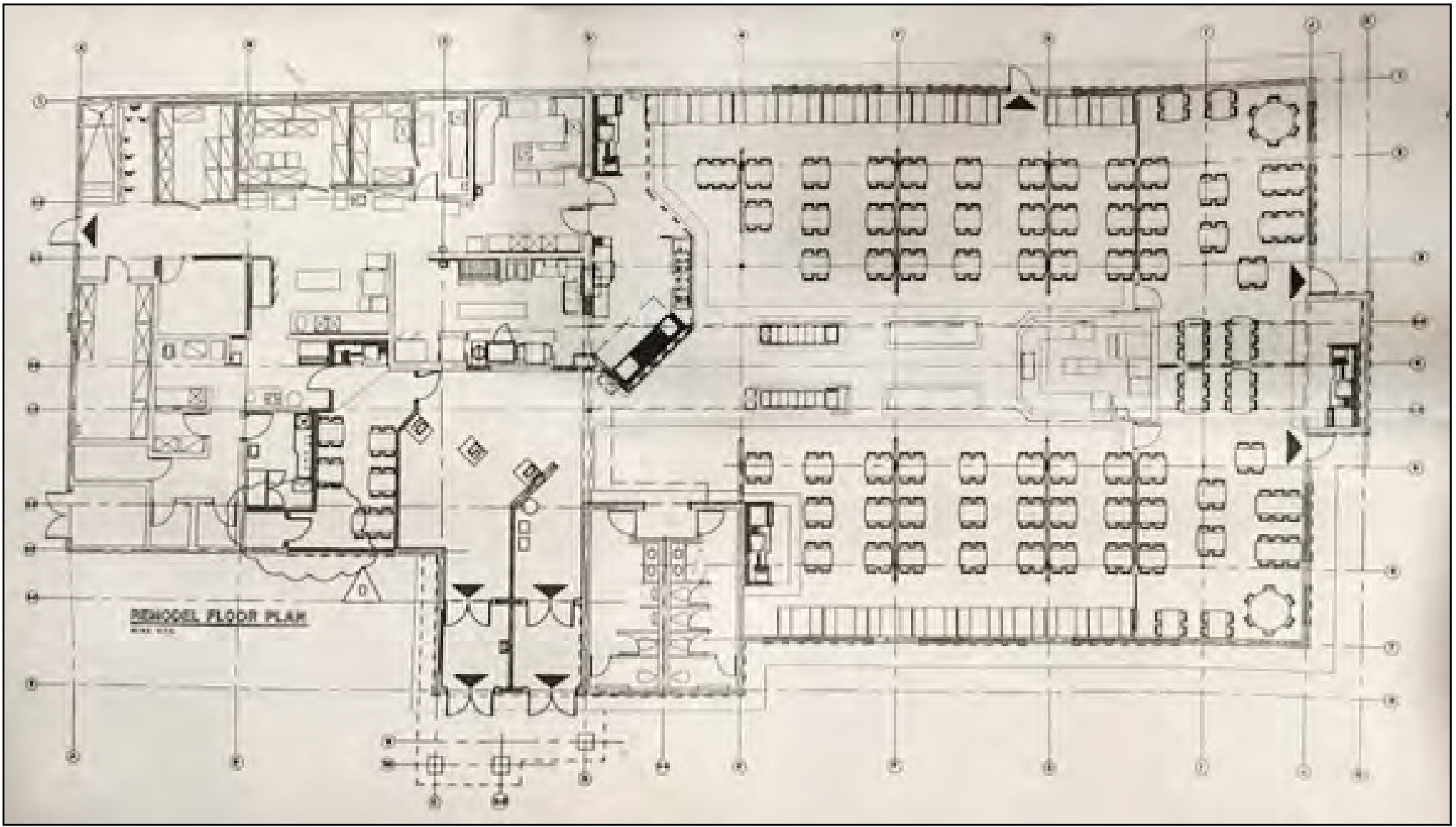




Large Restaurant or Redevelopment Opportunity

10810 W. 75th Street Shawnee, Kansas

FLOOR PLAN



PHOTOS





Large Restaurant or Redevelopment Opportunity

10810 W. 75th Street Shawnee, Kansas

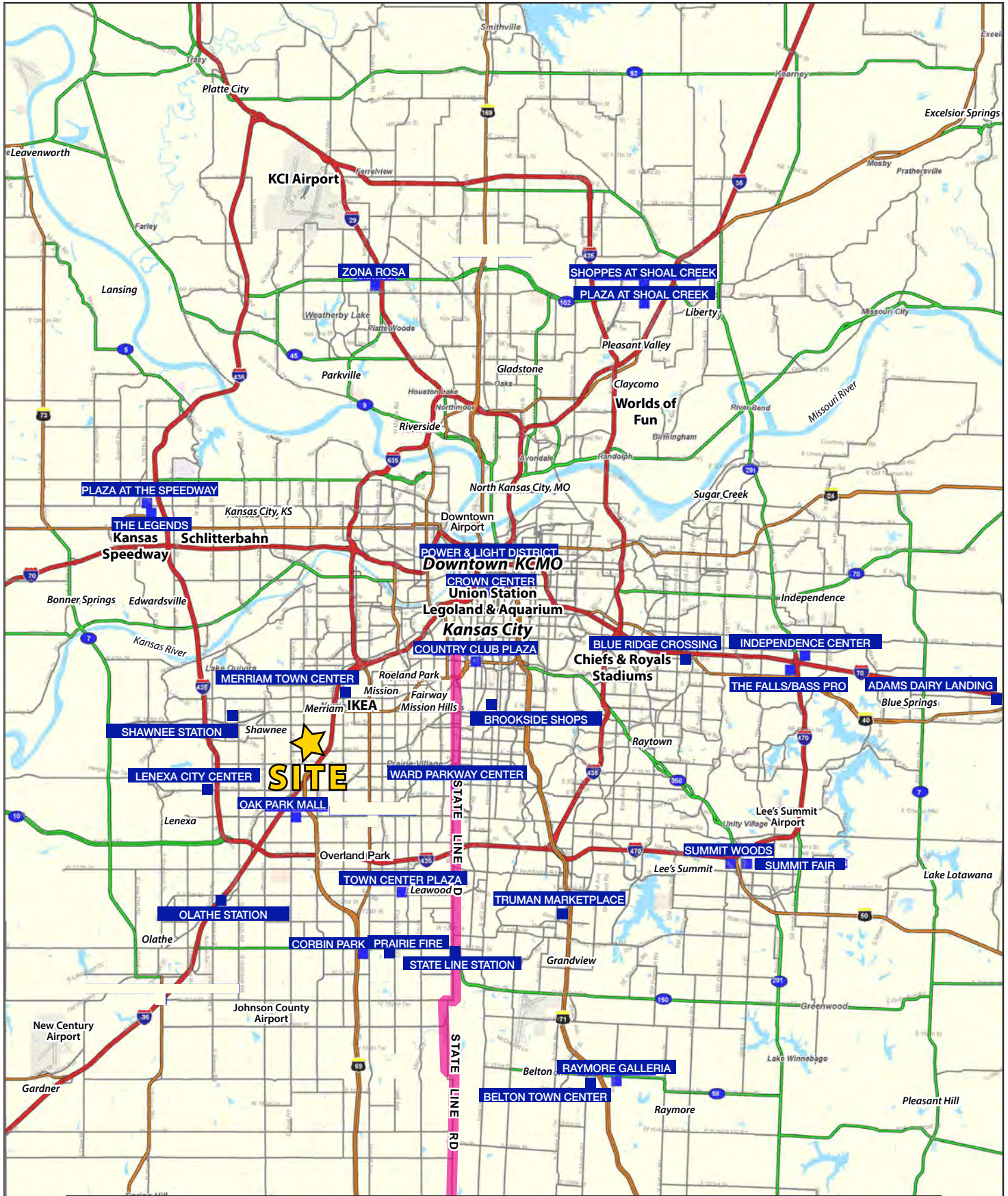
AERIAL





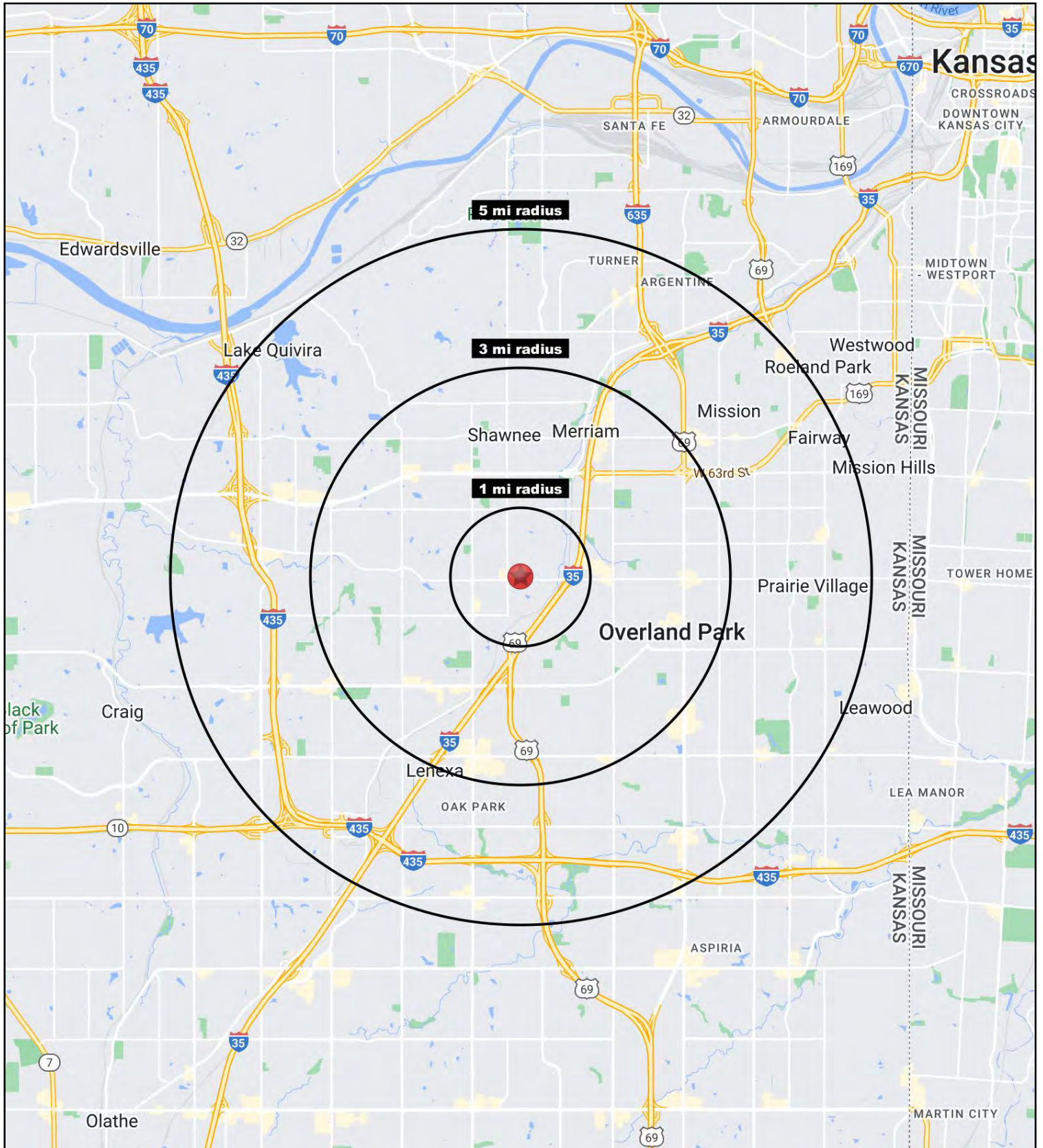
Large Restaurant or Redevelopment Opportunity

10810 W. 75th Street Shawnee, Kansas



Large Restaurant or Redevelopment Opportunity

10810 W. 75th Street Shawnee, Kansas





Large Restaurant or Redevelopment Opportunity

10810 W. 75th Street Shawnee, Kansas

10810 W. 75th Street Shawnee, KS 66214	1 mi radius	3 mi radius	5 mi radius
Population			
2022 Estimated Population	12,010	101,945	227,622
2027 Projected Population	12,393	104,386	235,047
2020 Census Population	11,931	100,729	224,408
2010 Census Population	11,911	98,617	215,884
Projected Annual Growth 2022 to 2027	0.6%	0.5%	0.7%
Historical Annual Growth 2010 to 2022	-	0.3%	0.5%
2022 Median Age	34.7	40.1	40.7
Households			
2022 Estimated Households	5,633	45,304	100,859
2027 Projected Households	5,977	47,452	106,272
2020 Census Households	5,543	44,358	98,765
2010 Census Households	5,453	42,500	93,813
Projected Annual Growth 2022 to 2027	1.2%	0.9%	1.1%
Historical Annual Growth 2010 to 2022	0.3%	0.5%	0.6%
Race and Ethnicity			
2022 Estimated White	67.2%	77.4%	79.8%
2022 Estimated Black or African American	12.1%	7.7%	6.3%
2022 Estimated Asian or Pacific Islander	3.6%	3.2%	3.4%
2022 Estimated American Indian or Native Alaskan	0.4%	0.4%	0.4%
2022 Estimated Other Races	16.7%	11.3%	10.2%
2022 Estimated Hispanic	17.6%	11.8%	10.6%
Income			
2022 Estimated Average Household Income	\$68,028	\$87,185	\$98,874
2022 Estimated Median Household Income	\$56,182	\$77,896	\$82,863
2022 Estimated Per Capita Income	\$31,939	\$38,867	\$43,906
Education (Age 25+)			
2022 Estimated Elementary (Grade Level 0 to 8)	4.8%	2.4%	1.8%
2022 Estimated Some High School (Grade Level 9 to 11)	3.4%	2.7%	2.5%
2022 Estimated High School Graduate	20.2%	18.1%	16.1%
2022 Estimated Some College	21.9%	20.7%	19.2%
2022 Estimated Associates Degree Only	12.4%	9.8%	8.3%
2022 Estimated Bachelors Degree Only	25.6%	30.4%	33.0%
2022 Estimated Graduate Degree	11.7%	15.9%	19.1%
Business			
2022 Estimated Total Businesses	515	4,515	10,862
2022 Estimated Total Employees	6,286	57,621	169,279
2022 Estimated Employee Population per Business	12.2	12.8	15.6
2022 Estimated Residential Population per Business	23.3	22.6	21.0

©2022, Sites USA, Chandler, Arizona, 480-491-1112 Demographic Source: Applied Geographic Solutions 11/2022, TIGER Geography - RS1

